



TIM WILLIAMS

TRANSFORMATION & ORGANIZATIONAL
EFFECTIVENESS LEADER

**AI WORKFORCE STRATEGY | OPERATING
MODEL DESIGN | ENTERPRISE CHANGE**

MY PERSONAL INTERESTS

I live in Westlake, Ohio. My wife and I have three kids — 6, almost 3, and 1 — and full-time parenting is my current assignment. It's the one I wanted. Weekends run on a rotation of sports, dance, and whatever they show interest in; we believe in trying everything.

Beyond the family orbit, I'm a science and tech nerd in the sincere sense. I've listened to The Skeptics' Guide to the Universe podcast every week for fifteen years, and David Pierce's Installer newsletter anchors my Sunday mornings.

My curiosity runs wide — space, medicine, history, social science — and there's usually a new piece of tech on my desk, sometimes practical, sometimes just fun.



My Family



Outdoor Enthusiast & Technophile

Science & Technology



ABOUT ME

Bridging AI strategy, workforce evolution, and enterprise results

TRANSFORMATION STRATEGIST

Over 20 years of driving organizational effectiveness. Led global programs impacting 260,000+ professionals and designing large-scale operating models.

WORKFORCE ARCHITECT

Expert in translating AI and automation into workforce strategy. Redesigned complex operating models and transition frameworks with 99%+ adoption globally.

DISCIPLINED OPERATOR

Focused on converting strategy into measurable growth. Managed multi-country structures while driving \$55M+ in consulting revenue growth.



CAREER JOURNEY

2003–2005

MARKETING MANAGER |
American Elite Financial

Directed sales and marketing activities selling financial services products.

2009–2023

TRANSFORMATION LEADER | **Deloitte Consulting**

Led \$265M solution area; directed workforce architecture and AI innovation.

2024–2026

ORG DESIGN & WORKFORCE STRATEGY | **Orgvue**

Bridged workforce planning and sales strategy in a SaaS environment.

2006–2009

TECHNOLOGY STRATEGY ADVISOR |
BearingPoint

Advised financial services on technology strategy and change readiness.

2023–PRESENT

INDEPENDENT STRATEGIC ADVISOR |
Wowledge

Advising a global HR strategy platform serving 8,500+ execs.

2023–PRESENT

CO-FOUNDER & MANAGING PARTNER |
Zorin Ventures

Deploy principal capital across alternative investment portfolio.

TIM WILLIAMS



Tim Williams

Transformation & Organizational
Effectiveness Leader

SIGNATURE PROJECTS

Global Workforce Architecture | Deloitte

Designed skills framework for global SAP S/4HANA Finance transformation.

Result: Aligned 260,000 professionals across 150 countries to one model.

Digital ERP Transformation | Global Manufacturing

Architected workforce adoption program for 12,000 employees.

Result: Achieved 99%+ adoption and 95%+ adherence with zero rollbacks.

AI/ML Capability Building | Growth Strategy

Scaled Training & Enablement offering from \$210M to \$265M in 3 years.

Result: Embedded AI/ML into enterprise GTM to drive \$55M+ growth.

TIM WILLIAMS

IMPACT IN NUMBERS

260K+

Professionals impacted
across 150+ countries

\$265M

Consulting Services
portfolio owned at
Deloitte

\$55M+

Measurable consulting
revenue growth

99%+

Adoption rate on major
operating model shifts

31X

Pipeline growth
driven at Orgvue

10K+

Headcount of
organizations
supported

30+

Direct reports and
managed team size

12

Career sponsor and
formal mentoring
relationships

LEADERSHIP & EXECUTION



ENTERPRISE SCALE

Led programs spanning 260K+ professionals and multi-country redesigns.

STRATEGIC + OPERATIONAL

Moving from C-suite roadmap design to sustained adoption.

INFLUENCE WITHOUT AUTHORITY

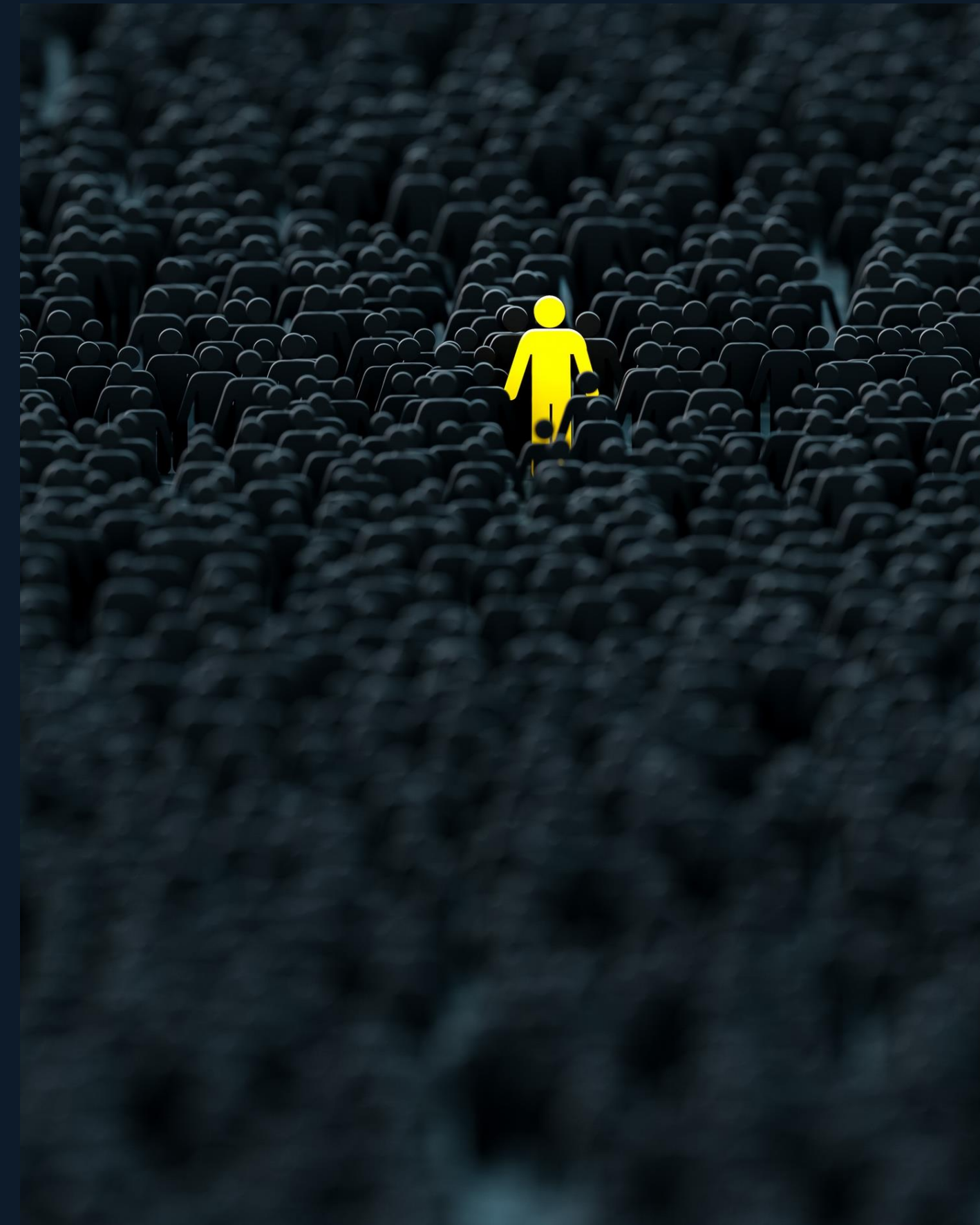
Building alignment in complex, matrixed global structures.

AI-FORWARD, HUMAN-CENTERED

Leading AI/ML service innovation while focusing on human-in-the-loop work design & behavior change.

THOUGHT LEADERSHIP

- ➔ **Licensed Suite:**
Digital Transformation: The Role of HR
- ➔ **Published:**
"Strategic Workforce Planning: Preparing for the Future"
- ➔ **Speaker:**
Oracle OpenWorld, Future of Work, & Cloud Strategy
- ➔ **Credentials:**
PMP | Google Cloud Digital Leader



CONTACT ME

PHONE

(614) 589-2232

timwilliams.personal@gmail.com

EMAIL

LINKEDIN

[linkedin.com/in/timwilliams-transformation](https://www.linkedin.com/in/timwilliams-transformation)

THANK YOU.

Moving from Experimentation to Durable Impact.

I am looking for roles where I can combine workforce strategy and AI-enabled change leadership to help organizations navigate the path forward with clarity.

2026



TIM WILLIAMS